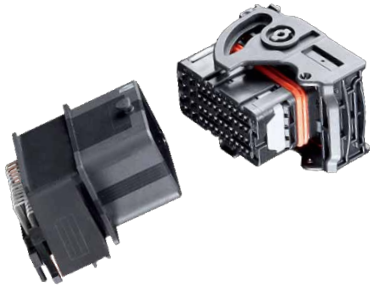




Molex Standard CMC Headers

The Molex family of CMC hybrid connectors and mating headers provide IP6K9K sealed, high-density, modular and cost effective connection system for the transportation industry.



CMC connector family - sealed, high-density connection system



CMC 154-circuit header in compliant pin used for engine control unit



CMC 48-circuit header used for engine control unit

Standard CMC headers can be used as wire-to-board connections for powertrain and body-electronic applications.

Standard CMC headers for wire-to-board connections are available in a variety of 1-, 2- or 3-pocket configurations to support the modularity need for customers PCBs.

CMC standard headers are offered as right-angle version for single-pocket and multi-pocket and as vertical version for 48-circuit single pocket configurations.

Specifically designed for wave soldering processes, CMC headers meet the standard PCB mounting requirements. In addition the compliant pin (3-pocket) 154-circuit CMC header supports the latest PCB mounting trend for Pressfit technology.

All headers are available off the shelf and are validated to ISO 8092-2, PSA B217050, USCAR 2, AK LV 214, JD 53.3 standards.

1-pocket CMC Header



28-circuit series 47745



32-circuit series 64334



48-circuit series 500762



48-circuit series 36638



53-circuit series 98997

2-pocket CMC Header



80-circuit series 502225



96-circuit series 36638

3-pocket CMC Header



112-circuit series 64333



154-circuit series 34763

Ordering Information

Description	Part No.	Mates with CMC Connector	Mating Color Coding	No. of Pockets	Pin Count 0.63mm	Pin Count 1.50mm	Pin Count 2.80mm	Terminal Type
28-Circuit CMC Header	47745-0100 47745-0200 47745-0300	64318-1011 or 64318-3011	Black Grey Brown	1	18	5	5	Solder Pin
		64318-1018 or 64318-3018						
		64318-1019 or 64318-3019						
32-Circuit CMC Header	64334-0100	64319-3211	Black		24	8	0	
	64334-0300	64319-3219	Brown					
36-Circuit CMC Header	36638-0006	64320-2311 or 64320-4311	Black		30	6	0	
	36638-0008							
	36638-0007	64320-2319 or 64320-4319	Brown					
	36638-0009							
36-Circuit CMC Header - (Signal Pins in AU 1.27µ)	36638-0013	64320-2311 or 64320-4311	Black					
36-Circuit CMC Header (based on 500762-0481)	47732-0361							
48-Circuit CMC Header	500762-0481	64320-1311 or 64320-3311	Black Brown	2	40	8	0	
	500762-0483							64320-1319 or 64320-3319
	36638-0002 36638-0004	64320-1311 or 64320-3311	Black					
	36638-0003 36638-0005	64320-1319 or 64320-3319	Brown					
48-Circuit CMC Header Vertical	560083-0481	64320-1311 or 64320-3311	Black					
53-Circuit Header	98997-1002	64321-1011 or 64321-2011	Black					
72-Circuit Header	36638-0001 36638-0010	64320-2319 and 64320-4311	Brown					
80-Circuit Header	502225-0801	64320-1319 and 64319-3211	48 Brown + 32 Black					
96-Circuit Header	36638-0011	64320-1319 and 64320-3311	48 Brown + 48 Black					
	36638-0012							
112-Circuit Header	64333-0100	64319-3211 and 64320-3319 and 64319-1218	32 Black + 48 Brown + 32 Grey	3				
154-Circuit Header	34763-0001	64321-2011 and 64321-2019 and 64320-1318	53 Black + 53 Brown + 48 Grey		Compliant Pin EON Style			

Further technical information, datasheet or drawing can be downloaded from the Molex website using the ordering part number.

www.molex.com/product/cmc.html